



## SGA Bulletin: September 2025

***Congratulations to everyone involved with the Summer exhibition*** which ended last week, and achieved a terrific 33 sales. I'd like to give a special thanks to our exhibition team - Jill, Annie, Becky, Pam, Sarah and Ros – who have kept the show on the road so well, and offer congratulations to Loraine Sherlock who won the Public Vote with her lovely textile picture “Rocky Shoreline” (pictured below). We will include more details of the exhibition next month, but are already thinking about next year, and would love to hear from you with any thoughts you have. Please email Jill on [tomalinmandj@hotmail.com](mailto:tomalinmandj@hotmail.com) (Jill is on holiday soon, so may not respond quickly).

In fact, we have another exhibition already looming on the horizon. The ArtCare exhibition at the hospital will run from *17th October – 21st November 2025*: hand in will be on **Monday 13<sup>th</sup> October**, with pick up on 24<sup>th</sup> November. Full details will be given in the October bulletin - but please get painting so that as many of us as possible contribute to this fantastic charity activity.

**Martin (Webster), chairman**

### Workshops

#### **REVISION TO PUBLISHED VERSION**

**Saturday 27th September**

**“How to become unstuck with your art” with Karen Walsh**

We regret that this workshop will now not take place.

**Saturday 22<sup>nd</sup> November**

**Trees, Winter and Summer, with Martin Webster**

Trees are Creation's architecture of the landscape. Wonderfully diverse in shape, colour and texture, they are such great subjects to paint. We will look at their diversity, their size, and general shapes of different trees – and have a go at painting them in different styles, and in different seasons. We will hopefully end the day with a better understanding of trees and the techniques of how to paint them. Please join us for a day of learning and fun.

*Martin Webster*



Places for both workshops are limited, so please book promptly with Bev via [beverleysingleton@rocketmail.com](mailto:beverleysingleton@rocketmail.com)

## Friday Art

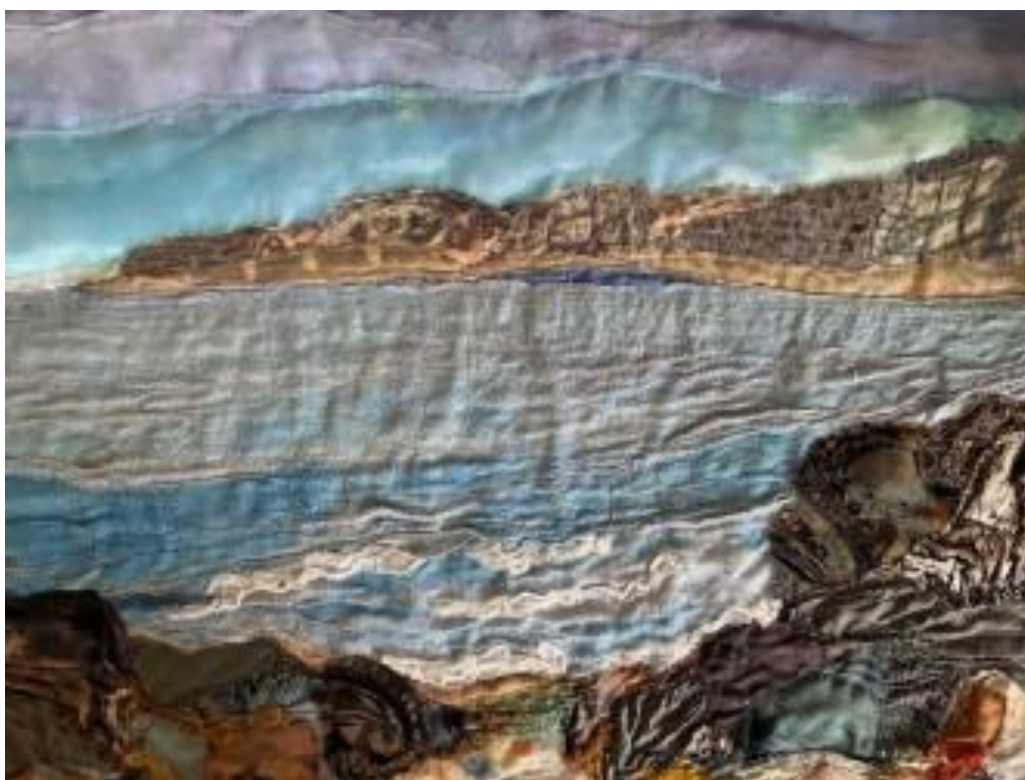
It's time we featured our thriving Friday Art sessions, held every Friday afternoon from 1 – 4pm at Bemerton Methodist hall. Participants come when they can, but there is a core of people who are regulars, usually about 18, and we would welcome more! The new weekly subs of £3 pay for coffee, tea and cake as well as the rental of the hall.

For many years, Josie and Ken generously provided tea, coffee and cake. They viewed the participants of Friday Art as family and we really miss their friendship and company. We are hoping they will join us in September for a little celebration to honour their contributions over many years. A date will be confirmed and a special bulletin sent out to all Friday Art goers to participate. Cheese and biscuits will feature, and no doubt there will be cake!

So, whether producing a new painting, working on recent or even old ones, in water colour, pencils, acrylic, needle felts, there is so much terrific creativity and inspiration every week – why not come and see it for yourself?!

## Salisbury Sketchers – Change of Date

The trip to Breamore House grounds planned for 21<sup>st</sup> September clashes with their Country Fair. This visit has been re-scheduled for Sunday, 14<sup>th</sup> September. The group will meet at 2.00 pm in the car park. For further details, please email Loraine at [paperstitch@icloud.com](mailto:paperstitch@icloud.com)



*Rocky Shoreline – Loraine's winning picture.*

### More Dates for your Diary

#### **17th October – 21st November 2025: ArtCare Exhibition at the hospital**

Hand in: Monday 13th October      Pick up: Monday 24<sup>th</sup> November

### Workshops

**Saturday 27<sup>th</sup> September:** Creative workshop with Karen Welsh.

**Saturday 22<sup>nd</sup> November:** Trees winter and summer, with Martin Webster.

### Next Salisbury Sketchers CHANGE OF DATE

Sunday, 14th September at Breamore, near Fordingbridge 2.00 - 5.00 pm (see website for details)

### Friday Art

Weekly, 1 - 4pm, at Bemerton Methodist Hall, Roman Road, Salisbury. SP2 9BH

Facebook: [www.facebook.com/salisburygroupofartists](https://www.facebook.com/salisburygroupofartists)

Instagram: @salisburygroupofartists

Website: [www.salisburygroupofartists.co.uk](http://www.salisburygroupofartists.co.uk)