



**ISSUE 77 APRIL 2024**



*Olive Tree – Pam Robinson*

**INSIDE**

**Pam Robinson Artist of the month talks about her art**

**Details of our Workshops and Exhibitions**

**and lots more**

## Dates for your Diary – More details within this newsletter

1st May 'Hand In' at Langford Lakes

3<sup>rd</sup> May - 7<sup>th</sup> June Langford Lakes Exhibition ((Wednesdays – Sundays, also open on Bank Holiday Mondays May 6th 27<sup>th</sup> May) . **Note Exhibition closed because of a WWF meeting on 4<sup>th</sup> May**

18th May Workshop with Michael Parker- Painting with a knife (in acrylics or oils) SEE WORKSHOP UPDATE WITHIN THIS NEWSLETTER FOR ALL WORKSHOPS AVAILABLE TO BOOK)

25th May Salisbury Art Trail begins, Langford Lakes Exhibition has been extended as part of the Arts Trail

7<sup>th</sup> June - Langford Lakes Exhibition Handback 1 – 4pm

20th July workshop on Mixed Media with Mike Bragg –( See newsletter for other workshops)

3<sup>st</sup> August – 31<sup>st</sup> August - our Annual Summer Exhibition at Gallery 4.  
Hand in 1<sup>st</sup> August 10 – 12.30am Handback 31<sup>st</sup> August 1 – 4pm

November- our SGA ArtCare exhibition at the hospital.

ArtScene- In between we will be taking part in Artscene on the Market Square on the first Sundays of June, August and September.

Friday Art every week at 1pm -4pm in Bemerton Methodist hall for just a small donation of £2. Tea, cake and excellent support and welcome from all the members.

Salisbury Sketchers – Watch out for new arrangements.

An SGA trip! Later in the year, with a date to be confirmed, we are planning a coach trip to London to see a major Van Gogh Exhibition at The National Gallery.

## Contents

.....	3
<b>Notes from the Editor .....</b>	<b>3</b>
<b>AGM Report from Martin Webster Our Chairman. ....</b>	<b>4</b>
<b>Artist of the month Pam Robinson.....</b>	<b>5</b>
<b>Exhibitions Update April .....</b>	<b>8</b>
<b>Workshop Update April .....</b>	<b>9</b>
<b>Salisbury Sketchers visit to the Cathedral Close,.....</b>	<b>12</b>
.....	

## Notes from the Editor

It was a delight to see so many members at our AGM. Somewhere in my notebook I have the minutes in draft form. Depending on my being able to decipher the writing I will add a link within the next Newsletter issue. The deciphering may take a while and may need the Rosetta Stone to help me with my hieroglyphics! We do however have a short report from Martin that is included in this newsletter.

I did enjoy the talk by John Elliot on Monet and the Impressionist Painting Sunrise. How such a large study can be made of just one painting is impressive and we were lucky that John was able to condense it down for us.

With now the weather hopefully improving and our countryside glowing in spring sunshine it will inspire you all to paint and create more I am sure. I am finding it hard to stop. However, that is not unusual and indeed my wife has said that if an aftershave was produced smelling of linseed oil and turps I would use it!

SPECIAL NOTE – After a little hassle we have got Rose our Treasurers Email to work. Will everyone therefore note this change ( See directory to rear of the Newsletter)

**Terry** -[newsletter@salisburygroupofartists.com](mailto:newsletter@salisburygroupofartists.com)

## AGM Report from Martin Webster Our Chairman.

We had an excellent meeting with forty or so members present.

The group is in a good place, with excellent take up of workshops (now we are down to six a year), expanding exhibitions (but not selling quite as many as we have known), a solid and growing 200+ membership, strong finances, sketching and Friday art both growing, and an upbeat feel overall. Can't be bad must be good good!

The committee is this:

Martin Webster Chairperson

Annie George Exhibitions

Rose Duly Treasurer

Paul and Lyn Ryder Membership

Jane Hanbridge Secretary

Genny Davidson Smith as Social secretary.

Workshops ???

You may know Annie wishes to move from being the lead on Workshops, so we need help to organise these. Diane Morris helps out here and will go on helping but we need one or more people to help lead and organise. It involves identifying potential Workshop leaders/painters (we can give help and guidance on how to find them!) and coordinating adverts, venue, materials needed and membership sign up , this may sound a lot but in reality it is not. Really the main task is taking email bookings updating the newsletter.

All workshops are organised to and including Jan 2025. Annie and also Diane will give full support to the end of the year as well and you of course will be part of a great team !

Lastly, Genny is planning a trip to London to the Monet or the Van Gogh exhibition, if you are interested in indicating an interest in going (we don't have a date yet) and which exhibition you prefer (or both) then send her an email on

[genny.ds1000@gmail.com](mailto:genny.ds1000@gmail.com)



## Artist of the month Pam Robinson

Your Newsletter Editor Talks to member artist Pam Robinson about her work.

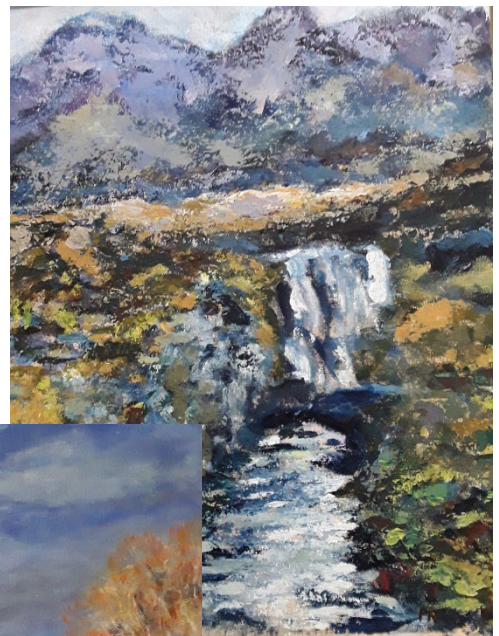


*TERRY - If someone was to ask you about starting to paint, how would you advise them? Indeed, do you have a particular driver that inspires you to paint and would you use that example to detail the benefits of art.*

Pam - If I was advising someone about how to get started in painting, I would firstly suggest they talk to artists they may know about how they got started, what sort of paintings they produce, and subjects they use. I would also suggest that they try out a few different mediums to see which they are most comfortable using. I think that acrylic is a good starting point as it is so forgiving as it can be painted over and is easy to control, purchase some basic colours and experiment with them to see how they

work together. Visit a few exhibitions and look at the paintings on display to help them decide what subject they might like to attempt. Do not rush out and spend a lot of money on different paints and brushes until being fairly sure about what path to take - use inexpensive , but not cheap products to get started. Possibly join a beginners course to get the best advice from an experienced artist, and as the course progresses it will become clearer which medium they prefer and what they would like to paint.

I think the driver that inspires me to paint is the need to express a scene or animal etc, in paint, on canvas, and in painting it, become so involved that you work through the process until completely satisfied that you have achieved the image you want. I feel that the process of painting allows the painter to express their innermost thoughts, often sub-consciously through the painting and in doing so it provides a sense of relaxation and fulfillment.





*TERRY– What do you find is that the most enjoyable of subject matter and indeed what do you find the most challenging?*

Pam - My most enjoyable subject matters are related to the countryside - rivers, hills, trees, animals and birds - nature really. Also I love the sea - its movement and waves, colour according to the weather, and how it constantly changes.

The subject I find most challenging are people - how to reproduce them in an expressive and realistic way. I do find that generally buildings do not inspire me, although I have painted some in the Salisbury area.

*TERRY -Do you have any artist or artists that you admire or follow. Indeed do you see them as an influence to your art and how you paint ?*

Pam - I have several artists that I admire / follow. I was introduced to the Scottish Colourists of 1900 - 1930 by a tutor, and I love the variety of their work, the colours they used and the way they applied the paint on the board. Obviously, artists such as Turner and Constable are an inspiration to generations of people, for the way that they depict light and the subjects they have painted. With regard to modern artists I admire Edward Seago, and more current artists such as Soroya French, Jake Winkle, for his lively, colourful amazing watercolours, Hockney for reinventing himself constantly and changing his methods and subjects, and lesser known perhaps, John Hammond who passed away recently, who has amongst other things, inspired me to introduce glazes in my work. I would say that Soroya French is an inspiration to me and many others, with her use of colours, and the way she uses paints to provide effects. I am looking forward to her demonstration later this year.

*TERRY - If you were to have the ability ( and endless cash) to curate a small exhibition in Salisbury how would you theme it and which of your chosen artists ( dead or alive ) would get top billing and why ?*

Pam - If I could curate a small exhibition in Salisbury (could it be small with all the artists I would want to include - past and present?), I would use the theme "The Evolution of Art" or "Inspirational Artists on Display" I would display examples of the classic artists work through paintings on the walls and then top billing would go to present day artists that I admire, and there would be a section for up and coming artists from our own area to give them a chance to shine.

## Exhibitions Update April

From Annie George

### 'Salisbury Group of Artists at Langford Lakes!



**May 3 – June 7, (Wednesdays – Sundays, also open on Bank Holiday Monday 27<sup>th</sup> May).**

*Pictures, glass, ceramics, felting, jewellery, prints and cards.*

**Hand In; Wednesday May 1<sup>st</sup>, 10.30am-1pm. Hand back; Friday June 7<sup>th</sup>; 1pm- 4pm.**

Members, please come and visit us at Langford Lakes. It's a beautiful location, a lovely Gallery and the Café makes delicious food. There will be an SGA member stewarding there during opening hours.

The Gallery and Centre is open Wednesdays -Sundays, 10-4pm and also Bank Holiday Mondays 6<sup>th</sup> and 27<sup>th</sup> May. (*see below for 2 exceptions*).

We open on Friday 3<sup>rd</sup> May and close at 1pm on Friday 7<sup>th</sup> June.

**Please note; The exhibition is closed on Saturday 4<sup>th</sup> May** due to a whole day Diocesan event. Also, on **Weds 8<sup>th</sup> May**, the Café is closed for one day, but the Gallery is open and simple refreshments available in the Gallery.



## **The Antelope Café- Exhibitions this Summer and Autumn.**

We have two artists taking up this opportunity, so far.

If you are interested in taking up this opportunity solo or with your friends, please contact me; [annie.george2308@gmail.com](mailto:annie.george2308@gmail.com) and I will put you in touch with Laura at The Antelope Café.

### **SGA Annual Summer Exhibition at Gallery 4,**

Salisbury Library , Gallery Four, **August 3<sup>rd</sup> – 31<sup>st</sup>.**

You will be able to submit up to 3 large and 2 small pictures, full details next month. You may not submit work that has previously been shown in Gallery Four this year.

#### **Dates for your diary;**

**‘Hand in’ Thursday 1st August 10am -12.30pm** (we may be able to arrange an alternative time the previous late afternoon)

**‘Hand back’ Saturday 31<sup>st</sup> August 1-4pm**

**Meet the Artists; Saturday 3<sup>rd</sup> August, 2pm.**

## **Workshop Update April**

From Annie George



Karen Welsh’s workshop was hugely enjoyed by all the participants.



Here are some of them with their colourful abstract work.

**Saturday 18<sup>th</sup> May - Michael Parker on 'Palette Knife techniques in Oils and Acrylics'.**

**If you would like to join Michael's workshop please contact me as soon as possible.** You can see more of Michael's work; [michaelparkerart.com](http://michaelparkerart.com)



Michael Parker, a well-known Christchurch artist, is skilled in palette knife painting, rarely using brushes! His loose expressionist style and range of subjects has made him a favourite with the Dorset public. Come along and experiment with or improve your technique with knife painting! Working mainly with a knife can give a very distinctive character to your work.



**Saturday 20<sup>th</sup> July - Mike Bragg- Mixed Media.**

Using watercolours, acrylics, inks, oil pastels and collage, Mike uses different techniques in an experimental style. On the theme of **Riverside with Winter Trees**, he will cover planning, making small sketches to choose composition, looking at movement, links and structures. Exploring techniques with a variety of media to promote interesting mark-making and colour to create effects and moods. Then bringing the whole together with energy and flow.

**Book now as spaces are limited.** [annie.george2308@gmail.com](mailto:annie.george2308@gmail.com)

**Saturday 28<sup>th</sup> September – Brigitte Scott-Florek “Freeing up the Artist”** Using collaborative techniques, different media, your other hand, working together as a group or on a whole class piece. Final individual pieces will often be much freer than you would normally produce!

This is very much a chance to look at working in a very different way!

**Saturday October 26<sup>th</sup> – A day with Soraya French**

Soraya will be demonstrating with Golden Paints as their Ambassador, showing how they make possible her amazing colourist style, in a demonstration and workshop. A chance to work with this well-known artist is very rare! **This workshop is fully booked.** (You can join the waiting list).

**Please note, Jenny Muncaster’s workshop; Creative Wellbeing is now Saturday 25<sup>th</sup> January, not November.**

Jenny set up and runs **The Colour Factory Winchester** . Details to follow soon.

To book any of the above ; [annie.george2308@gmail.com](mailto:annie.george2308@gmail.com)

**Workshop fees; Members £45 per day, guests £50**

**To pay by Bacs;**

**Salisbury Group of Artists**

**30 97 41**

**acc. 03627988**

**ref; workshops**

(alternative payment methods available).

**All workshops are on Saturdays, 10am-4pm, at Bemerton Methodist Hall, Roman Road, Salisbury, SP2 9BH.**



## SALISBURY SKETCHERS VISIT TO THE CATHEDRAL CLOSE,

SUNDAY, APRIL 21st, 2024.

### Report from Loraine Sherlock



This was our first outdoor sketching event of the year, and whilst it was a lovely bright sunny afternoon, the wind blowing around the Close was absolutely freezing and not ideal conditions for drawing and painting. But I am pleased to say that sixteen members came along and good artwork was produced despite our cold hands. It was good to welcome two new Sketchers who I hope will join us on location next time, when we will surely have warmer weather.

The next event is on **Sunday, May 19th** and will be held at Breamore. There is a free car park, cafe, farm shop, and Countryside Museum if wet. There is a small entry charge to the Museum. In addition to the lovely surrounding countryside, there is a little Saxon church and Breamore House (not open for us inside) providing opportunities for sketching.

I will have some seats available in my car for any non drivers who wish to come.

In the meantime, as part of their Festival of Blossom, Mompesson House, has offered us twenty free places on Sunday, May 12th, to sketch in the house and garden. At the time of writing there are five places left if any member wishes to take part. We have been, asked if willing, to allow our artwork/sketch books to be displayed for a week on a shelf in their bookshop.

Mompesson House would also like people to know that during the Festival they are holding workshops and activities for adults and children, and also for persons with special needs and dementia, allowing access at quiet times. Check out all these workshops - National Trust/Festival of Blossom/ Wiltshire.

If you would like more details about these two events, please contact Loraine by email- [paperstitch@icloud.com](mailto:paperstitch@icloud.com), or phone 07496894568.

*'You don't have to be great to start, but you have to start to be great' (Zig Ziglar)*

# LAVERSTOCK GROUP ART EXPO 3 - 22 May 24



An exciting expedition into a wide range of subjects, mediums and styles by a local ART group 😊 come and vote for your top three favourites!  
<https://younggallerysalisbury.co.uk/>

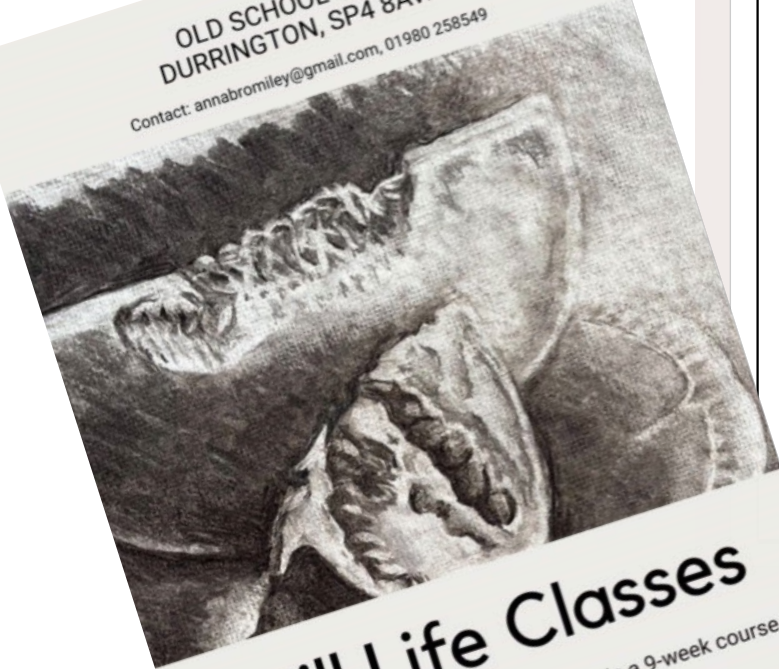
@ The Young Gallery,  
Salisbury Library,  
Marketplace,  
Salisbury SP1 1BL





OLD SCHOOL HALL,  
DURRINGTON, SP4 8AW

Contact: [annabromiley@gmail.com](mailto:annabromiley@gmail.com), 01980 258549



## Still Life Classes

Learn to draw and paint still life scenes in a 9-week course.  
Thursdays 14:00-16:30 beginning 18th January.

## ArtWrite

@ The Antelope Café  
Catherine Street, Salisbury

3pm Mondays



Old Harry Rocks by Angie Street

### Anarchic Writing with ArtWrite

Led by Angie Street

# 5 and 19 February # 4 and 25 March

Creative scriptwriting/poetry in response to art and artefacts in the Antelope Café.

LOOK at it, TALK about it, WRITE about it.

Just roll up with pens and paper and a measly £3.

Booking E: [astreetwriter@yahoo.com](mailto:astreetwriter@yahoo.com) T: 07392 010193

### The Drawing Room

Monday 7- 8.30pm or Tuesday 4.30-6pm

Central Salisbury, Belle Vue Road.

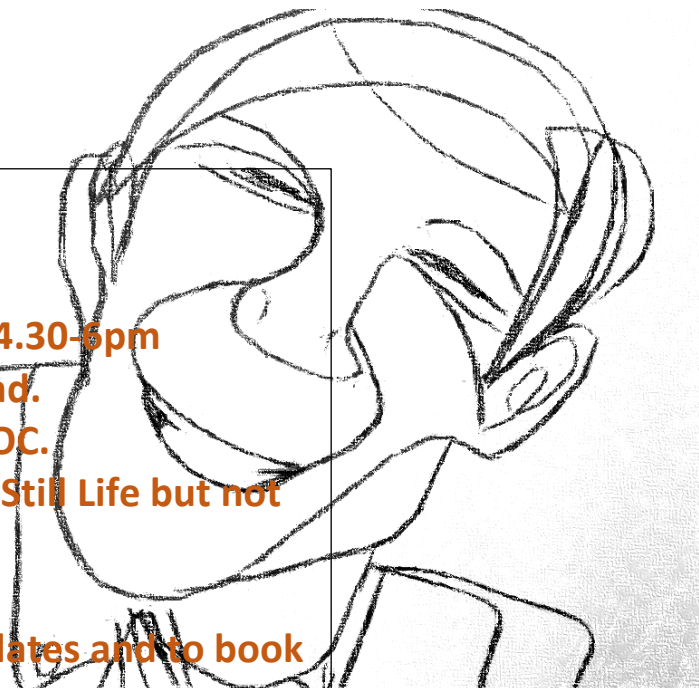
Fortnightly drawing sessions. FOC.

Portraits, Dancers, Performers, Still Life but not as we know it.

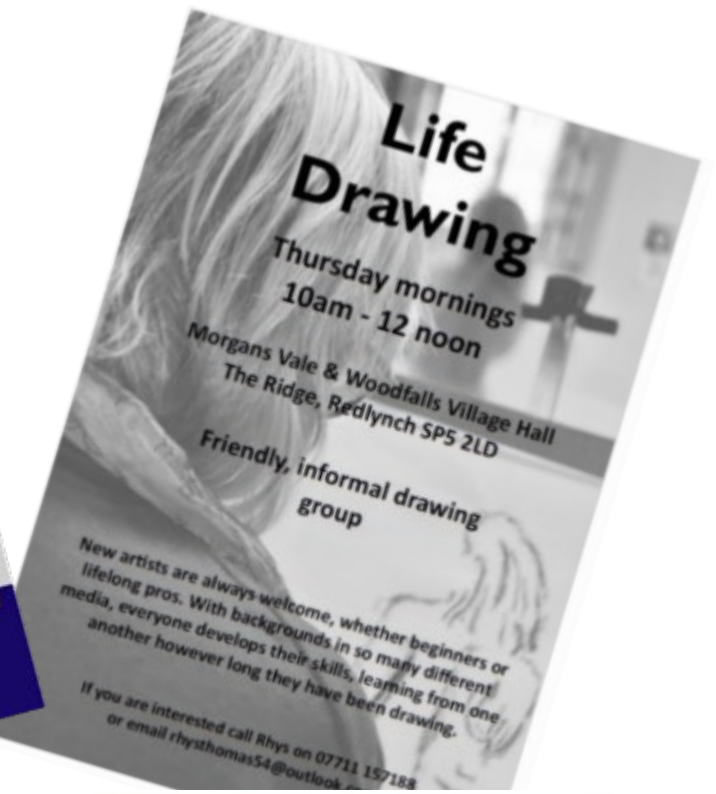
Why? Just for the hell of it.

Contact Angie Street for more dates and to book a seat. Sweet.

[astreetwriter@yahoo.com](mailto:astreetwriter@yahoo.com) or text 07392 010193

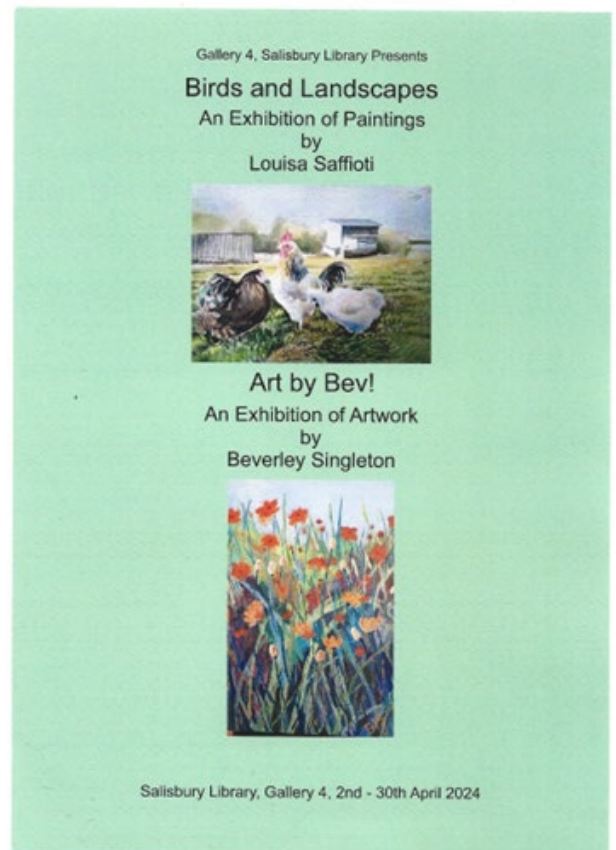






Belmont Fine Arts - established 2007 offering giclee and digital prints from business cards and greetings cards to 60inch wide canvas, A2 flatbed scanning and bespoke picture framing we are sure we will be able to help. We work with individual artists and photographers as well as commercial clients nationwide producing an excellent finish to showcase your work at its best. Visit us in our studio and barn just outside Salisbury to discuss your needs, choose mounts, mouldings and papers or just have a chat about how we can work with you. We are a friendly family run business with a growing customer base so drop us an email or give us a call and we look forward to hearing from you and working together soon. (We want to be able to give you our full attention so by appointment only please)

2 Belmont Cottages,  
Southampton Road  
Clarendon  
Salisbury  
SP5 3DE



### **FEES**

**ANNUAL MEMBERSHIP FEE** £20 individual; £30 Family  
**WORKSHOPS** £45 members (booking essential ) £50 Guests  
**UNTUTORED LIFE CLASS** £12 per session.  
**TALKS / SALISBURY SKETCHERS** free.  
**FRIDAY ART** £2 per session.  
**VISITS** fees vary. See website/ newsletters

FRIDAY ART MEETINGS ARE HELD THROUGHOUT THE YEAR, EXCEPT AUGUST, AT METHODIST CHURCH HALL, ROMAN RD., BEMERTON, SALISBURY. SP2 9BH

FURTHER DETAILS OF ALL THESE EVENTS CAN BE FOUND ON OUR WEBSITE.

[www.salisburygroupofartists.co.uk](http://www.salisburygroupofartists.co.uk)

### **CONTACTS**

**MINUTES SECRETARY** JANE HANBIDGE  
[jane.hanbidge@icloud.com](mailto:jane.hanbidge@icloud.com)

FRIDAY ART Phone Josie and Ken Smith 01980 846508)

**MEMBERSHIP** PAUL RYDER 07818 423188 [paulryder164@gmail.com](mailto:paulryder164@gmail.com)

**NEWSLETTER** TERRY KEMP 01980 620256 [newsletter@salisburygroupofartists.com](mailto:newsletter@salisburygroupofartists.com)

**TREASURER** ROSE DULY 01722 321544 [treasurer@salisburygroupofartists.com](mailto:treasurer@salisburygroupofartists.com)

**WEBSITE** TERRY KEMP 01980 620256 [newsletter@salisburygroupofartists.com](mailto:newsletter@salisburygroupofartists.com)

**WORKSHOPS** ANNIE GEORGE 01722 326596 [annie.george2308@gmail.com](mailto:annie.george2308@gmail.com)

