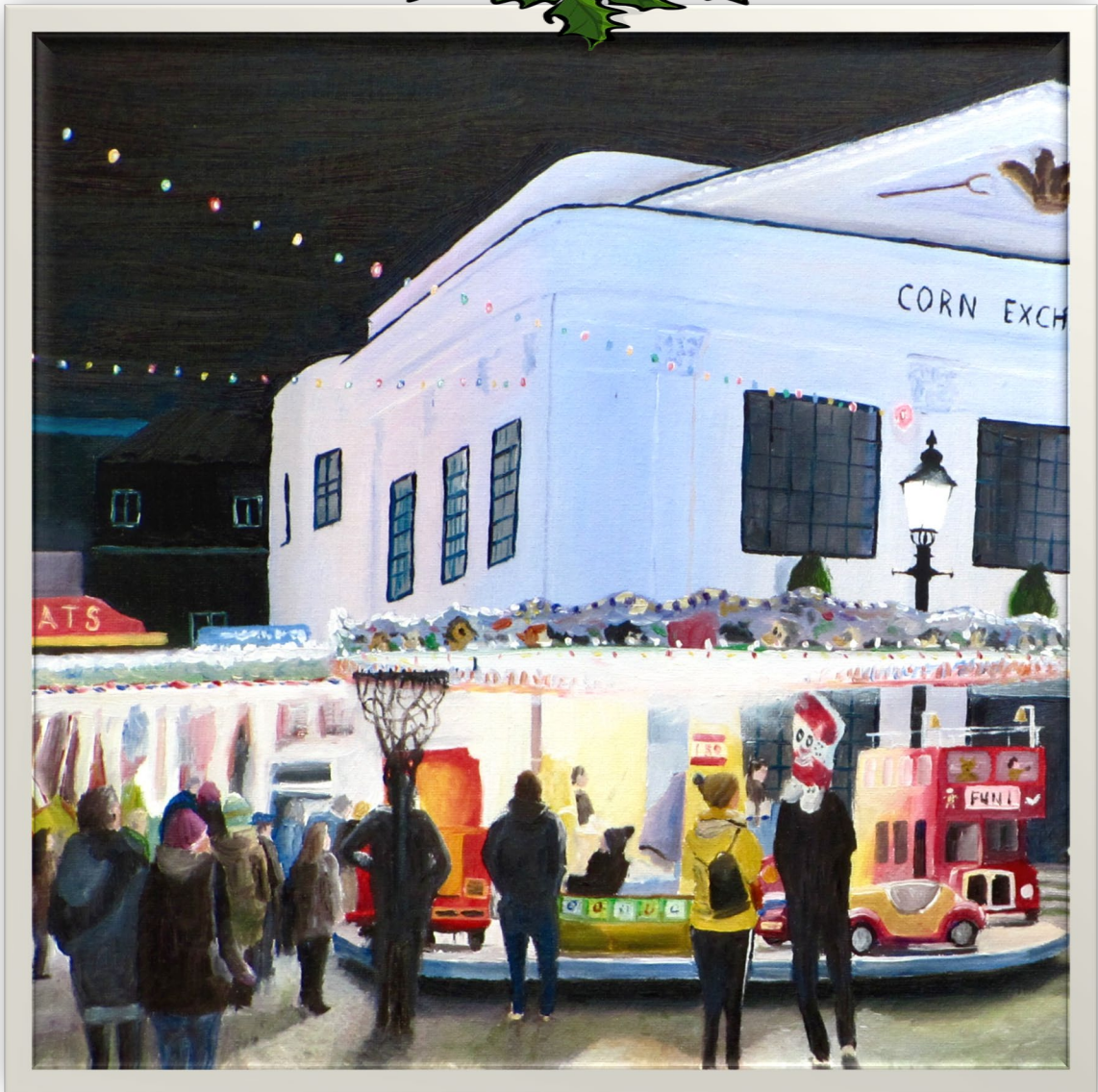


SALISBURY GROUP OF ARTISTS NEWSLETTER

December 2023 Issue 73



INSIDE

Cover artist Richard Paul with tales of his artistic travels

A look at next years Art Workshops

and lots more

Contents

Chairman's Christmas Message	3
---	---



Notes from the Editor	4
Artist of the Month – Richard Paul	5
.....	7
'New Beginnings' at Gallery 4, Salisbury Library for March.	7
Christmas Workshop Update from Annie George.....	8
IMPORTANT CHANGE to Workshops for 2024.....	9
Workshop Programme for 2024.	10
Exhibitions Update from Annie George	11
The Magic of Singer Sargent	12
Salisbury Sketchers visit to Salisbury Cathedral in November from Loraine Sherlock	13

DIARY

A quick look at SGA Activities for 2024 . This will be updated each month to keep you all up to date with SGA opportunities. They may, of course, be subject to change

2024

- Tuesday January 9th 'Hand back' for SGA ArtCare Exhibition at SDH, ArtCare Office 10am -2pm***
- Saturday January 27th- 'The Wonderful World of Colour', acrylic inks and paints, with Alta Edwards***
- Saturday March 23rd Ways into Abstraction – Karen Welsh***
- March- Joint Spring Exhibition with Plain Arts Salisbury***
- Saturday May 18th – Palette Knife Techniques – Michael Parker***
- Saturday July 20th – Mixed Media – Mike Bragg***
- Saturday October 26th -Golden Paints – Soraya French***
- Saturday November 23rd – Creative Well being – Jenny Muncaster***



Chairman's Christmas Message

We have had a good if not excellent year, with membership growing, great exhibitions, etc., and yet not forgetting we have had some challenges in workshops as well (see elsewhere in the newsletter). So thank you to everyone for belonging and contributing so much to our common artistic life.

In a world that appears to be becoming more unstable and inhumane by the month our art together provides a brighter light in our lives and with the wider public. Like all painters, I had to learn that in order to get light into my paintings, I have to put in some strong darks. Indeed the more I need light to show, the darker and more profound the dark have to be.

So perhaps as we celebrate Christmas in the midst of this moral and physical darkness, I hope you can let the integral message of Christmas, the good news of the Christ child born to bring light amidst the darkest of darks, show in your various celebrations and gatherings.

May I wish you all a happy and celebratory Christmas and look forward to new artistic ventures together in 2024.

Martin Webster



Notes from the Editor

My sincere apologies to everyone for the fact that there was no November 2023 Newsletter. Whilst adjusting pictures that hang up my stairs at home I slipped, fell and put my feet and arm through the bannisters. This meant a trip to the hospital for an x-ray. The arm was broken! Luckily it was a clean break in a position that required no plaster but rest and pills for a few weeks. That said no art, no driving, and no computer work etc so no Newsletter.

However, I am now able to function thanks to the pills, the NHS and more importantly a caring wife! (though I did get a ticking off for doing some artwork moving on carpeted stairs in just stockinged feet.)

I do hope you enjoy this newsletter that gives you a terrific initial view of SGA's 2024. I have said it before and will no doubt say it again , but we are a really busy active arts group. This is because of all the hardworking people behind the scenes who work so hard for all of us. I am sure you will join me in thanking them for all they do.

Martin has given me a Chairmans Message to include that says so much in a few words. A special thanks to him for this and his guiding hand as our Chairman!

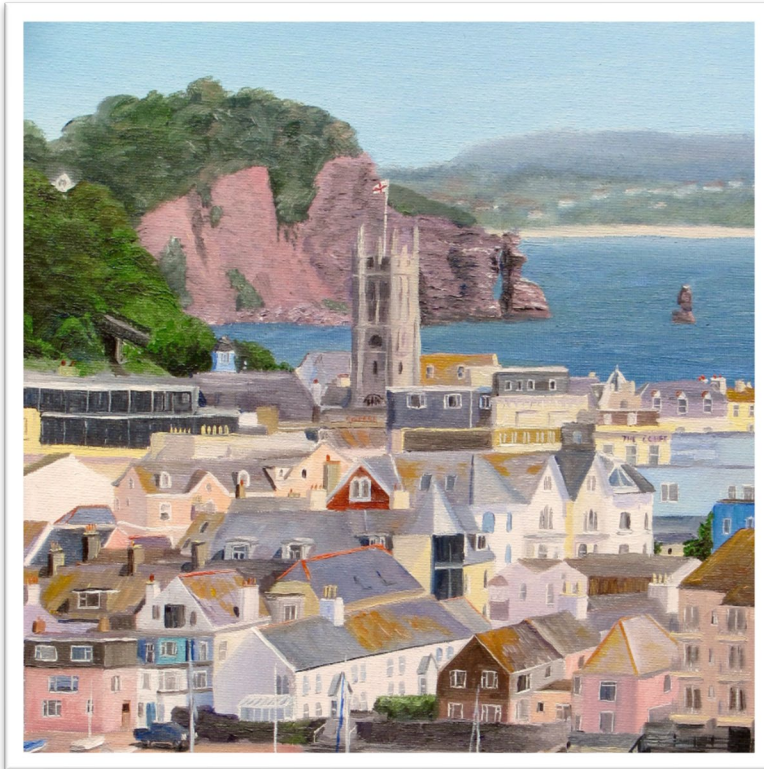
So as the days brings us closer the Christmas and the New Year may I as the Newsletter Editor wish you all a peaceful and enjoyable holiday time with the good advice to always wear slippers when using the stairs!

Terry -

newsletter@salisburygroupofartists.com



Artist of the Month – Richard Paul



Richard is a regular exhibitor at our Exhibitions often arriving on his bike with his pictures on his back ! You will see from his profile that he is a busy and a perhaps ‘athletic’ artist in the pursuit of his subject matter and the finished work.

Terry - Like all practicing artists professional and amateur there is always sometime that ‘lightbulb moment’ or start point for their artistic journey. Can you describe how you started your artistic ‘Journey’ and what followed

Richard - Back in 1990 I had left university and had begun my full time career designing and developing software. I was in need of something recreational as an antidote to work. So, I joined an art evening class. It was mainly bored housewives chattering, but it introduced me to pastels and dipping pens, sketching a model, and a freshly dead badger that quickly shed its fleas around the room!

It was over a decade before I had the courage to show my work. With a couple of artist friends I hired a local hall and we put on an exhibition. It got me noticed and invited to join an art group. With that success I opened my house for Hampshire Open Studios and have done so every year since.



Terry – It is appropriate that in our first question to you I used the word journey for travel appears to be important to you. Tell us about some of your favourite places and perhaps where you would put down foundations for a permanent studio should this be possible.

My exploration of Britain began with the night train to Scotland to climb the Munros (mountains over 3000ft). I climbed in all seasons, and early on suffered a bout of snow-blindness in the Cairngorms. With painful red eyes, burnt skin, and bleeding lips, my reflection was more akin to an extra from a horror film. But what a fantastic day in the snow I had.

Through my trips I have found some stunning places – the stunning beaches of Harris; the tranquillity of loch Nevis; the surreal peaks of Assynt; the insect heaven of a Welsh heather moor in August; and the romantic ruined windmills of Norfolk’s empty quarter to name but a few. But if I were to settle somewhere new, I think it just might be Teignmouth in Devon, with its holiday vibe and distinctive red sands. Now if I could settle absolutely anywhere – I think it might be the coastal city in ‘Kiki’s Delivery Service’, but then it reminds me of so many of the places I have been

Terry - You use a variety of media in your works but there must be a favourite. What would this be and why?

I can work in most media and I do like to play with the unconventional. I once created a scene using just tree pollen and dampened black card! But my media of choice is oil. Its not just the rich colours, but the way it can be manipulated long after it has been applied. I really enjoy working up a texture, blending colours onto the canvas.

Terry - Do you have any particular artist that you admire from the past and indeed one from present times. How would you describe why you admire them partially.

I have many influences to my work, and I sometimes hide a reference in my paintings. I admire Renoir's ability to capture a face with all the emotion, and I also adore the detailed backgrounds to Studio Ghibli animations.

Terry - If you were asked to give three top painting tips what would they be?

My tips for painting

- 1) Explore the different media and substrates to find what works best for you, and find your own way of using it.
- 2) When painting brick or stone, start with a pale opaque such as Naples yellow or pale rose blush, and then blend other colours on top.
- 3) When you've laid down too much oil paint and you can't control it, an IKEA serviette is perfect for blotting up the excess without leaving any fibres behind.



'New Beginnings' at Gallery 4, Salisbury Library for March.

Our next exhibition opportunity will be **'New Beginnings'** at Gallery 4, a joint collaborative exhibition with Plain Arts. We will be meeting with members of the Plain Arts Committee in early January to finalise exact 'hand in' and 'hand back' dates and details for submissions. With both groups taking part there are potentially many exhibitors, though we do have a fair few members in common.

The title 'New Beginnings' refers to the spirit our two groups working together, but not to the subject of your work, which can be anything you choose. The exhibition will include a 'large picture' exhibition in the main gallery and a 'small picture' exhibition in the Community Lounge. We are hoping for the largest 'Small picture exhibition' so far!

The finalised submission details will be posted on our website salisburygroupofartists.co.uk and sent to you by **Newsflash** in **mid January**, six weeks before the exhibition.

The 2024 Summer Exhibition, again at Gallery 4 will be for the month of August.

We are also exploring other possibilities for smaller exhibitions and will keep you informed in the Newsletter.

Christmas Workshop Update from Annie George



Both of our November workshops, the first by Helen Southwell, chair of Plain Arts and the second by Martin Webster, our own Chair, were very well-attended and a great time was had by all as can be seen by some samples shown here.



IMPORTANT CHANGE to Workshops for 2024.

Sadly, this year, well-attended workshops have not always been the case. It has often been difficult to fill the spaces and unfortunately, four have been cancelled, for various reasons, mostly due to lack of participants. Since Covid, workshop leaders costs have increased and consequently their fees have risen. SGA have kept our charge for workshops the same for a number of years and have therefore had to subsidise the increasing gap between income and expenditure on workshops.

The SGA Committee have decided that **for 2024 there will be a workshop every two months** and that the charge will need to be **£45 per day** to make them financially viable. This will be reviewed towards the end of next year. Those who attend other art workshops will know that this is still a very reasonable fee for a day workshop.

The previously arranged workshop with **Soraya French** will, of course, stay in place for **October**, in addition to this bi-monthly programme.

(For anyone who has already booked for an upcoming workshop in 2024, we are holding the old price of £30).

This change above has necessitated a 're-jigging' of workshops for the coming year and I would especially like to thank **Diane Morris** for all her work in arranging and helping me with this.

Workshop fees;

Members £45 per day, guests £50

To pay by Bacs;

Salisbury Group of Artists

30 97 41

acc. 03627988 ref; workshops

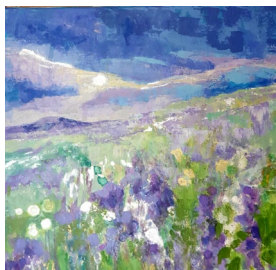
(alternative payment methods available).

All workshops are on Saturdays, 10am-4pm, at Bemerton Methodist Hall, Roman Road, Salisbury, SP2 9BH.

Workshop Programme for 2024.

All the following workshop leaders are highly recommended by other art local groups.

January 27th - Alta Edwards takes us on a journey into **‘The Wonderful World of Colour’**, layering in thin to thick in acrylic inks, and translucent acrylic paints. Using these techniques to paint a colourful landscape.



Saturday 23rd March - Karen Welsh shows us **‘Ways into the Abstract!’** (workshop postponed from October) Karen is an old friend of SGA and shows us how to begin exploring abstract work.

Saturday 18th May - Michael Parker on **‘Palette Knife techniques in Oils and Acrylics’**

Saturday 20th July - Mike Bragg- Mixed Media Using watercolours, acrylics, inks, oil pastels and collage, Mike uses different techniques in an experimental style, on the theme of **Trees**. This workshop has moved from February.

Saturday 28th September – Brigitte Scott-Florek **“Freeing up the Artist”** Using collaborative techniques, different media, your other hand, working together as a group or on a whole class piece. Final individual pieces will often be much freer than you would normally produce!

Saturday 26th October – Soraya French. We had already arranged this workshop with **Soraya French**, we are not going to lose this one!

Soraya will be demonstrating with Golden Paints as their Ambassador. A chance to work with this well-known artist is very rare! More details in the New Year.

Highly recommended.

Saturday 23rd November – Jenny Muncaster from **The Colour Factory Winchester. Creative Wellbeing.**

Details to follow next year. To book ; annie.geoge2308@gmail.com or rose@duly.org.uk

Exhibitions Update from Annie George

ARTCARE Exhibition

A big **'Thank you'** to all members who are currently exhibiting in our Christmas show for ARTCARE at Salisbury District Hospital, running until January 4th. **Don't forget 'HANDBACK' is 10am -2pm on Tuesday 9th January!**

This year we have had significantly fewer entries for the above and would be very interested to hear if there are any reasons for this that we can influence or try to improve.

Please drop me a line; annie.george2308@gmail.com



Scenes from the main hospital corridors on floors 2 and 3

The Antelope Café

Exhibition Opportunities will become available in the Antelope Café next year. Keep a look out for announcements in the coming newsletters.

The Magic of Singer Sargent

Talk – The Magic of Singer Sargent by Laura Bell

We painters of watercolours are very lucky in Salisbury to have two examples of Singer Sargent's work in this medium on our doorstep in the late Sir Edward Heath's home at Arundells. He was a supreme magician with watercolours and usually fills his fellow watercolourists with wonder and frustration. There is a bonus Singer Sargent at Arundells in the form of a small oil landscape. In this talk they will be discussing these three pictures for his technique in watercolour especially, drawing the distinction between that and his oil technique and perhaps revealing some of the secrets of this master of illusion, whilst also putting his work into the general context of contemporaneous and modern practices.

Laura Bell

Laura Bell is a graduate of the Fine Art Department at Leeds University. She is a qualified teacher and has worked with children and adults. During the past thirty five years she has been a freelance tutor of adults in painting, drawing and art history (for Bristol University Lifelong Learning Department and the WEA). Her very popular practical classes are based in Salisbury and district. Her own work covers a broad range of figurative and abstract disciplines but always with an emphasis on colour. Her work has been shown at the Royal Watercolour Society Annual Open at Bankside, St Barbe Open at Lymington and the Bath Society of Arts Summer Show as well as numerous local venues.

When: 2.30pm Thursday 11th April 2024

Where: The Studio, Arundells, Cathedral Close, Salisbury.

Tickets: £15

<https://arundells.org/events/talk-the-magic-of-singer-sargent/>



Salisbury Sketchers visit to Salisbury Cathedral in November from Loraine Sherlock

We were a comparatively small group for our last I meeting, mainly due to members' commitments elsewhere. But those of us who participated found it an enjoyable and rewarding afternoon.

The interior of the cathedral is a beautiful but an awesome sight that makes it difficult to know where to begin. I am always daunted by the soaring architecture and much admire those, like one of our group, who successfully take on the challenge. Myself and some other members settled on tomb effigies or small architectural features to test our drawing abilities, and it is when the hand endeavours to portray what the eye sees, that you realise how very skilled these ancient craftsmen were, particularly with regard to intricately carved details.

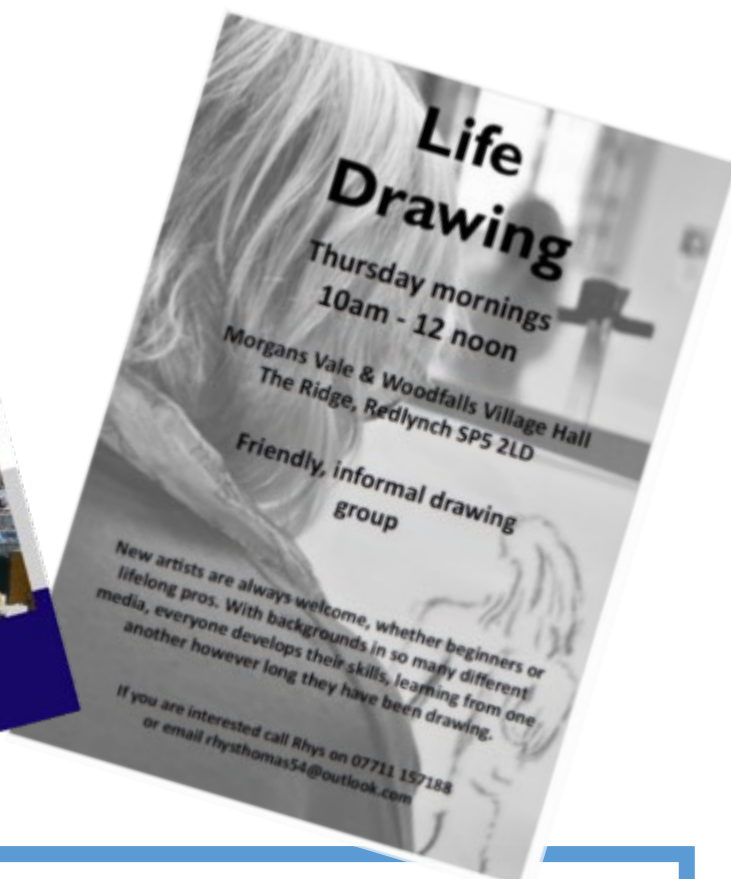


The interior of the cathedral is not the easiest location in which to sketch due to the subdued lighting, and after about an hour of concentrated drawing, it was good to gather together for a cup of tea and a chat before saying our goodbyes for this year.

We will resume again in 2024, hopefully starting in February with another indoor location. Any suggestions for possible indoor and outdoor locations would be welcomed, together with requests for repeat visits to venues we have previously visited.

I would like to thank all those members who participated this year and who support the Sketchers, come rain or shine. Your company has been very rewarding and enjoyable and I look forward to seeing more great sketches next year. If you would like to join us, please contact me for more information.

I would also like to thank Terry for including my write ups in the Newsletter, and for cleverly incorporating my photos into the piece.



Belmont Fine Arts - established 2007 offering giclee and digital prints from business cards and greetings cards to 60inch wide canvas, A2 flatbed scanning and bespoke picture framing we are sure we will be able to help. We work with individual artists and photographers as well as commercial clients nationwide producing an excellent finish to showcase your work at its best. Visit us in our studio and barn just outside Salisbury to discuss your needs, choose mounts, mouldings and papers or just have a chat about how we can work with you. We are a friendly family run business with a growing customer base so drop us an email or give us a call and we look forward to hearing from you and working together soon. (We want to be able to give you our full attention so by appointment only please)

2 Belmont Cottages,
Southampton Road
Clarendon
Salisbury
SP5 3DE
(Opposite Kennel Farm)
07891 480240

FEES

ANNUAL MEMBERSHIP FEE £20 individual; £30 Family
WORKSHOPS £45 members (booking essential) £50 Guests
UNTUTORED LIFE CLASS £12 per session.
TALKS / SALISBURY SKETCHERS free.
FRIDAY ART £2 per session.
VISITS fees vary. See website/ newsletters

FRIDAY ART MEETINGS ARE HELD THROUGHOUT THE YEAR, EXCEPT AUGUST, AT METHODIST CHURCH HALL, ROMAN RD., BEMERTON, SALISBURY. SP2 9BH

FURTHER DETAILS OF ALL THESE EVENTS CAN BE FOUND ON OUR WEBSITE.

www.salisburygroupofartists.co.uk

CONTACTS

MINUTES SECRETARY JANE HANBIDGE
jane.hanbidge@icloud.com

FRIDAY ART Phone Josie and Ken Smith 01980 846508)

MEMBERSHIP PAUL RYDER 07818 423188 paulryder164@gmail.com

NEWSLETTER TERRY KEMP 01980 620256 newsletter@salisburygroupofartists.com

TREASURER ROSE DULY 01722 321544 roseduly@outlook.com

WEBSITE TERRY KEMP 01980 620256 newsletter@salisburygroupofartists.com

WORKSHOPS ANNIE GEORGE 01722 326596 annie.george2308@gmail.com

